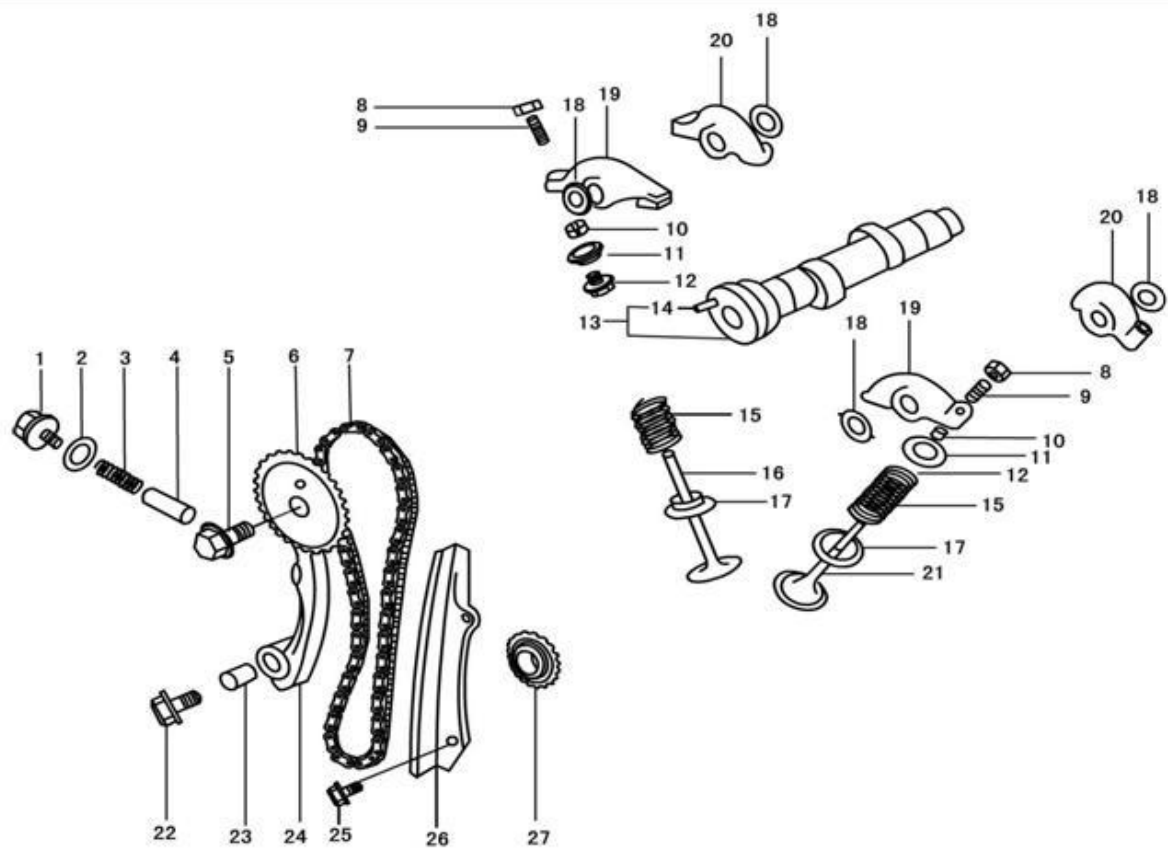


6 CAMSHAFT AND CHAIN TRAIN PART



No.	Code name	Description	Qty
1	270Q - 05400	Bolt assembly	1
2	270Q - 05007	Washer	1
3	270Q - 05005A	Tensioning spring	1
4	270Q - 05004	Tensioning spring plate	1
5	QTB13	Small hexagon-headed bolt with edge M12×1.25×30	1
6	270Q - 05002A	Camshaft timing sprocket wheel	1
7	270Q - 05100	Timing chain assembly	1
8	270Q - 01502	Valve clearance adjusting nut	4
9	270Q - 01501	Valve clearance adjusting bolt	4
10	270Q - 01004	Valve lifter	8
11	270Q - 01003	Upper seat of valve spring	4
12	270Q - 01200	Valve rod oil seal assembly	4
13	276Q - 05001	Camshaft	1
14	QTB40	Dowel pin φ6×14	1
15	276Q - 01002A	Valve spring	4
16	270Q - 01005A	Intake Valve	2
17	270Q - 01001	Lower seat of valve spring	4
18	270Q - 01008	Wave form washer	4
19	270Q - 01510	Valve rocker arm of first cylinder	2
20	270Q - 01610	Valve rocker arm of second cylinder	2
21	270Q - 01006	Exhaust Valve	2
22	QTB13	Small hexagon-headed bolt with edge M8×32	1
23	270Q - 05003	Tightner pin shaft	1
24	270Q - 05300	Chain tightner	1
25	QTB10	Hexagon-headed bolt with edge M6×10	2
26	270Q - 05200	Chain limit plate	1
27	270Q - 04005A	Crankshaft timing chain sprocket	1