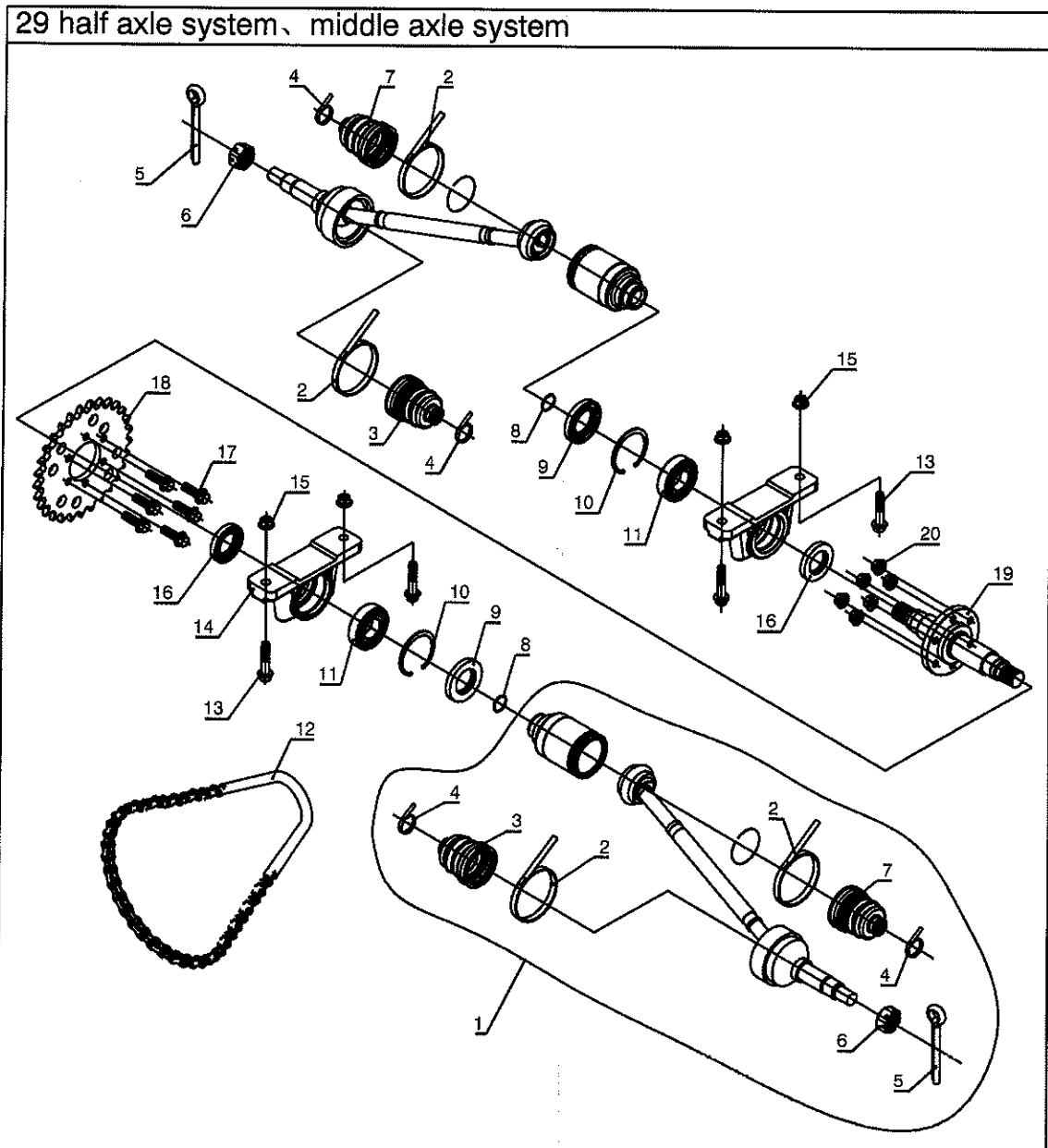
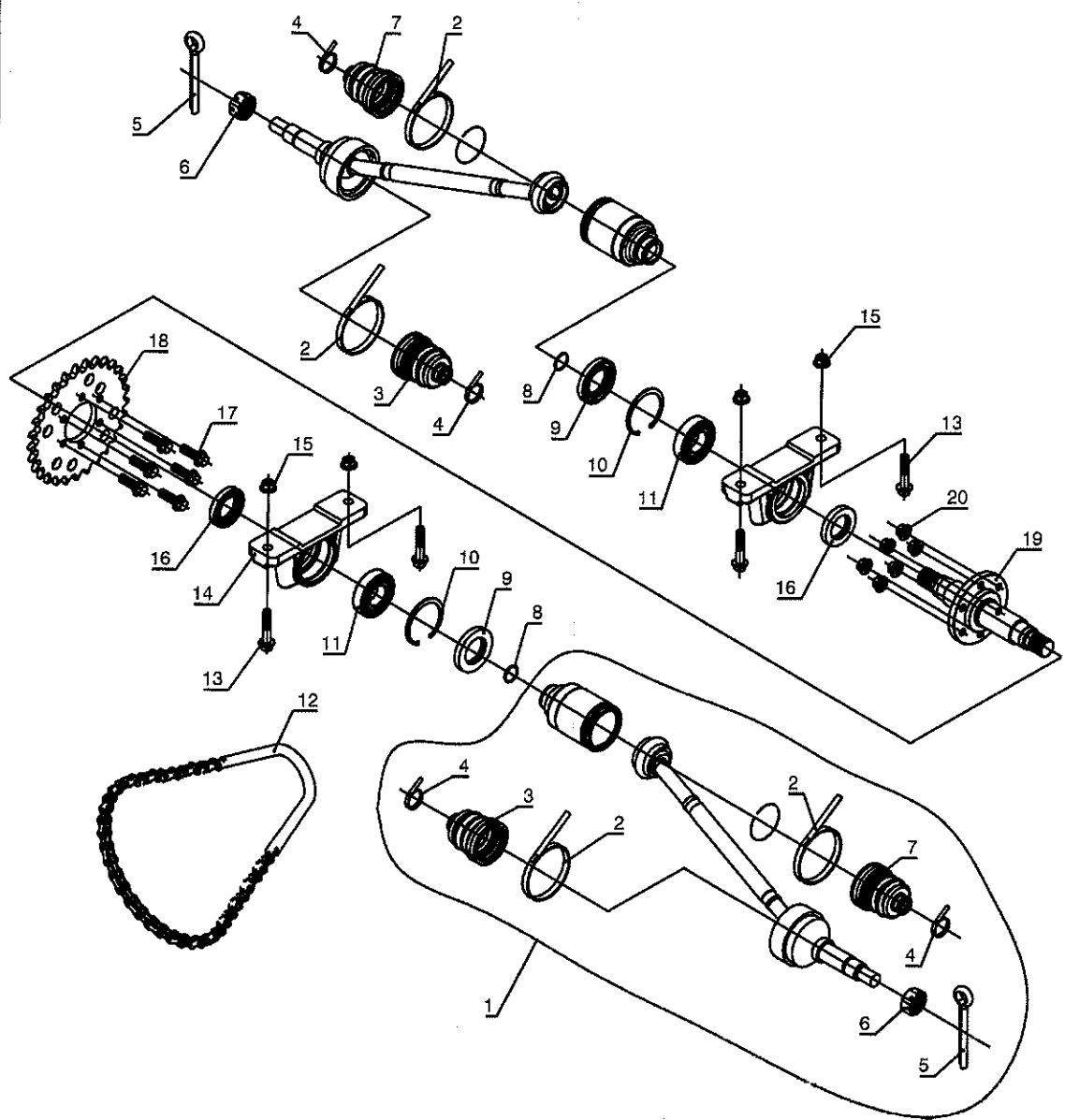


## 29. Half axle system, middle axle system



NO.	PART NO.	DESCRIPTION	QUANTITY
1	E250.07.01.00.00	half axle assy	2
2	DI250.07.01.00.01	big boot bridle	4
3	DI250.07.01.00.04	outer boot	2
4	DI250.07.01.00.03	small boot bridle	4
5	91-CP4x45	cotter pin 4x45	2
6	9457-M18x1.5	slotted nut M18x1.5	2
7	DI250.07.01.00.02	inner boot	2
8	2303016	steel thread circlip	2
9	E250.07.00.10.00	gease seal FB 35x62x8	2
10	893.1-? 62	circlip for hole 62	2

29 half axle system、middle axle system



NO.	PART NO.	DESCRIPTION	QUANTITY
11	281-1206	ball bearing 1206	2
12	DN250.07.03.00.00A	10A chain(66)	1
13	5787-M12x1.5x45	flange bolt M12x1.5x45	4
14	DI250.07.00.00.06	bearing seat (cast steel)	2
15	6185.1-M12x1.5	flange nut M12x1.5	4
16	3452.1-FB35x55x8	gease seal FB35x55x8	2
17	5787-M8x30	flange bolt M8x30	6
18	DN250.07.00.00.04A	chain pulley(43 tooth)	1
19	E250.07.02.00.00	middle axle	1
20	6187.1-M8	self-lock nut M8	6