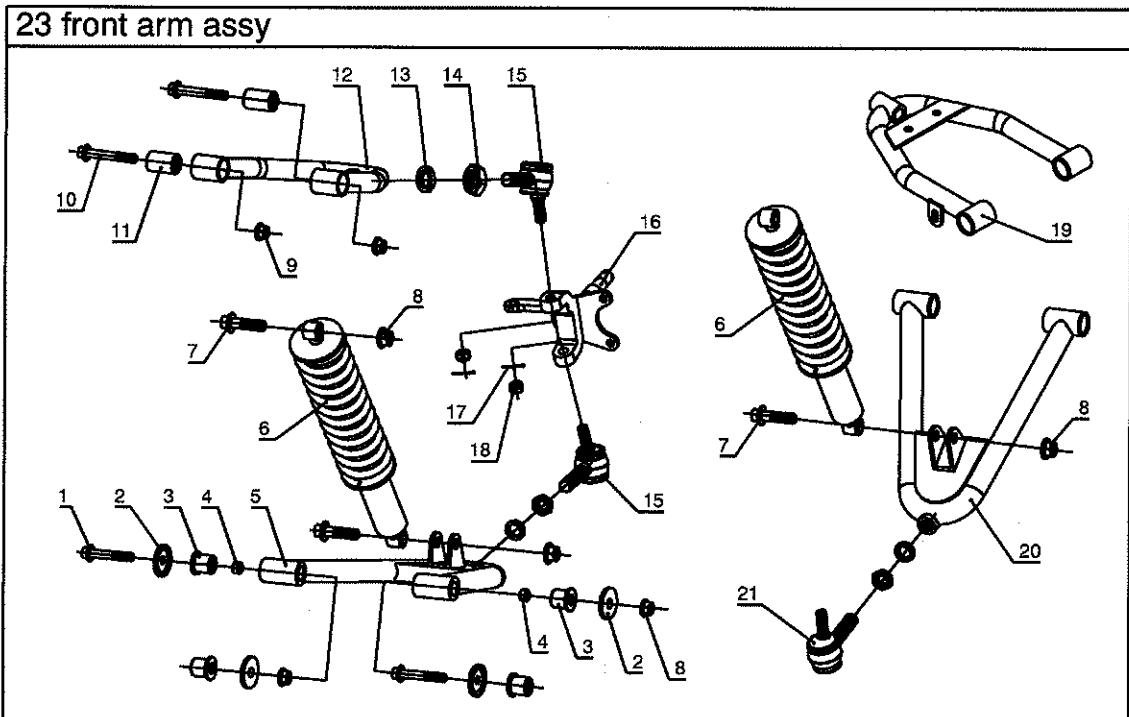


23、 Front arm assy



NO.	PART NO.	DESCRIPTION	QUANTITY
1	5787-M12x1.5x85	flange bolt M12x1.5x85	4
2	JD0268200	front lower arm seal	8
3	JD0268001	front lower arm farinose bush	8
4	DS250.02.00.00.01	front lower arm spacer	4
5	E250.02.07.00.00	front right lower arm	1
6	DS250.02.00.00.06	front shock absorber	2
7	5787-M12x1.5x60	flange bolt M12x1.5x60	4
8	6185.1-M12x1.5	flange nut M12x1.5	8
9	6185.1-M10x1.25	flange nut M10x1.25	4
10	5787-M10x1.25x60	flange bolt M10x1.25x60	4
11	JD0110004	front upper arm spacer	4
12	E250.02.05.00.00B	front right upper arm	1
13	93-SW16	spring washer ? 16	4
14	6172.1-M16x1.75	thin nut M16x1.75	4
15	JD0268300	right universal join	2
16	DS250.02.00.00.03	right knuckle	1
17	91-CP2.5x30	cotter pin 2.5x30	4
18	9457-M12x1.5	slotted nut M12x1.5	4
19	E250.02.06.00.00	front left upper arm	1
20	DS250.02.03.00.00	front left lower arm	1
21	JD0266300	left universal join	2