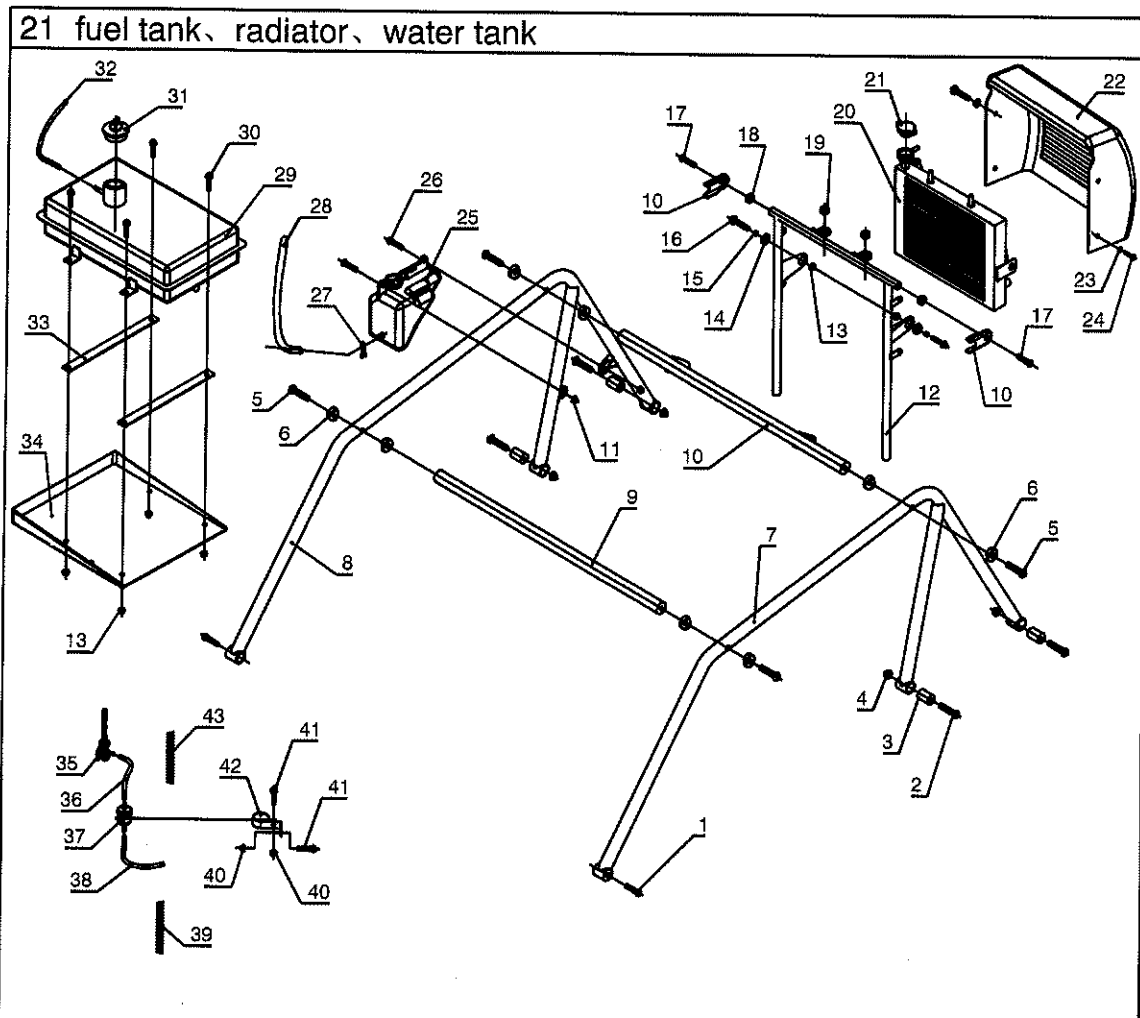
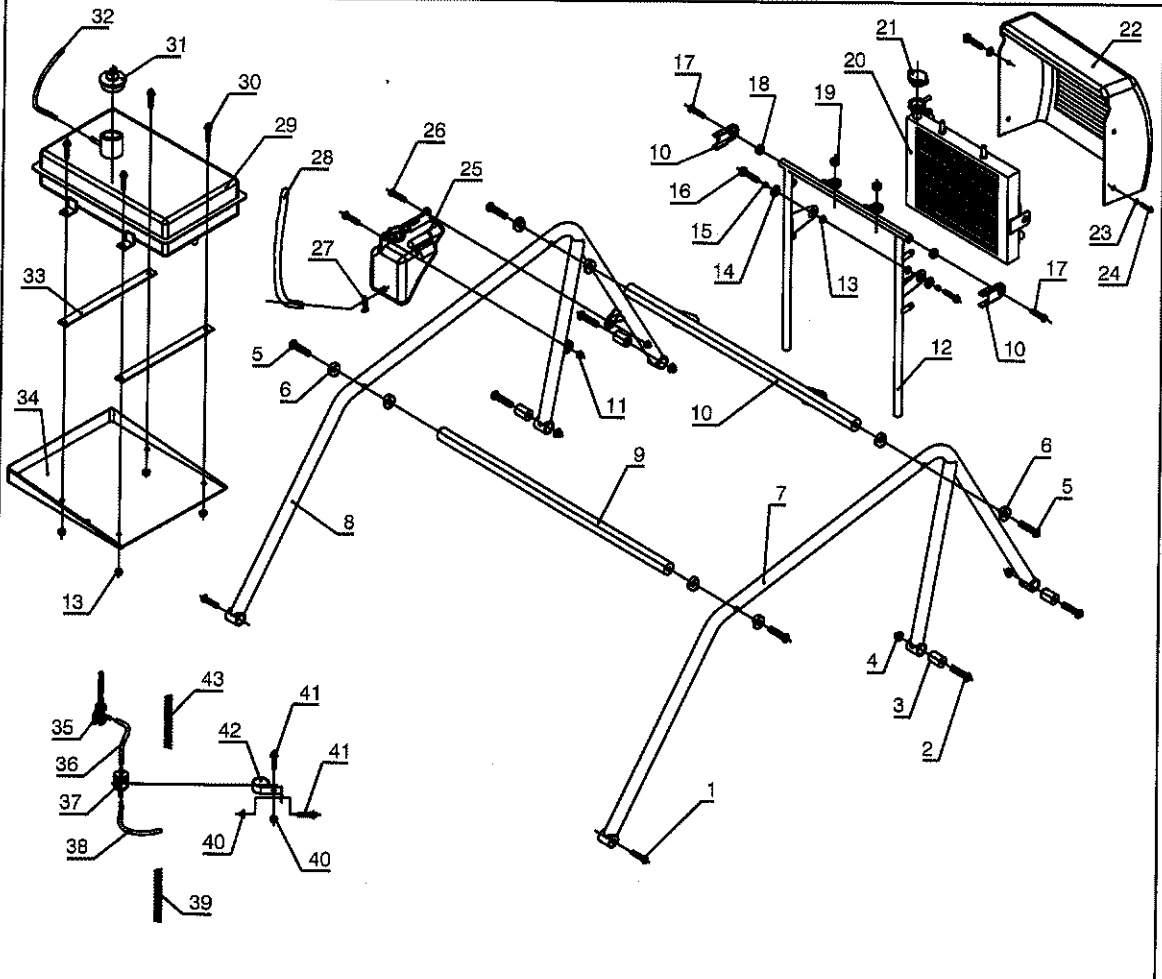


21. Fuel tank, radiator, water tank



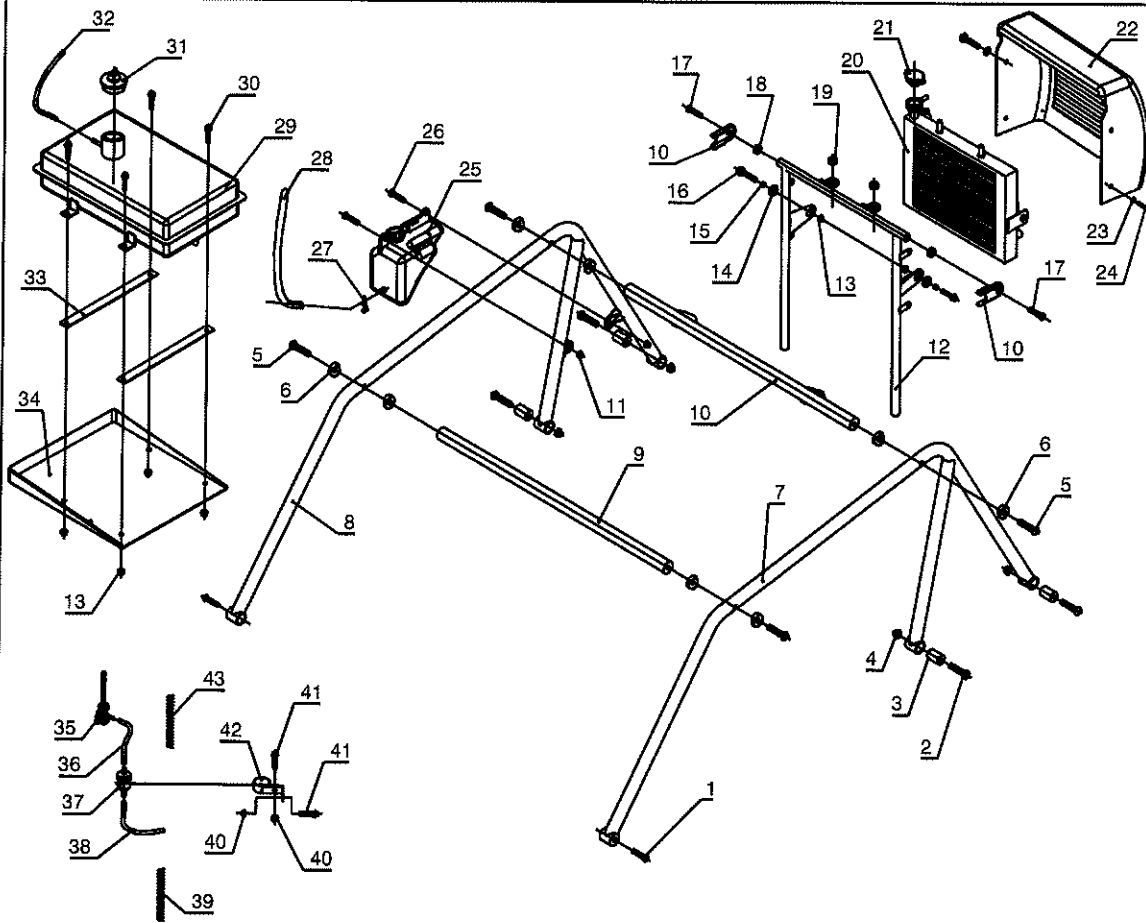
NO.	PART NO.	DESCRIPTION	QUANTITY
1	70.2-M10x25	hexagon bolt M10x25	2
2	70.2-M12x60	hexagon bolt M12x60	4
3	D250.11.771	nylon bush. protective bar	4
4	6185.1-M12	flange nut M12	4
5	70.2-M10x70	hexagon bolt M10x70	4
6	DN250.01.02.00.01	arc cushion ? 32	8
7	E250.01.02.01.00	left protective bar	1
8	E250.01.02.02.00	right protective bar	1
9	E250.01.02.03.00	front top protective bar	1
10	E250.01.02.04.00	rear top protective bar	1
11	6185.1-M8	flange nut M8	2
12	E250.01.02.05.00	support radiator	1
13	6187.1-M8	self-lock nut M8	6
14	JD0900006	side rubber cushion. radiator	2
15	JD0900011	steel bush ? 8.2 . radiator	2

21 fuel tank, radiator, water tank



NO.	PART NO.	DESCRIPTION	QUANTITY
16	5787-M8x25	flange bolt M8x25	2
17	70.2-M8x30	hexagon bolt M8x30	2
18	E250.05.01.00.01	steel cushion. support radiator	2
19	JD1910003	top rubber cushion. radiator	2
20	DI250.05.01.01.01	radiator	1
21	DI250.05.01.01.02	radiator cap	1
22	E250.01.02.00.04	plastic cover radiator	1
23	JD0900008	rubber washer ? 6	4
24	818-M6x16	bolt M6x16	4
25	D250.09.903	plastic water tank	1
26	70.2-M8x25	hexagon bolt M8x25	2
27	CF250T-420022	clamp 12 . water tank	1
28	E250.05.01.00.03	pipe . water tank	1
29	E250.05.02.03.01	fuel tank	1
30	5787-M8x30	flange bolt M8x30	4

21 fuel tank, radiator, water tank



NO.	PART NO.	DESCRIPTION	QUANTITY
31	D650.04.03.01.03	cap . fuel tank	1
32	E250.05.02.00.03	vent pipe . fuel tank	1
33	S250.11.003	rubber cushion . fuel tank	2
34	E250.01.02.00.13	plastic baffle fuel	1
35	JD1138000	fuel tank switch	1
36	E250.05.02.00.01	pipe1 . fuel tank	1
37	DS250.11.01.00.09	gas filter	1
38	E250.05.02.00.02	pipe2 . fuel tank	1
39	DN250.05.02.00.07	protective spring 2 . fuel pipe	1
40	6187.1-M6	self-lock nut M6	2
41	5787-M6x20	flange bolt M6x20	2
42	DN250.05.02.00.02	clamp 1 . fuel filter	1
43	DN250.05.02.00.06	protective spring 1 . fuel pipe	1