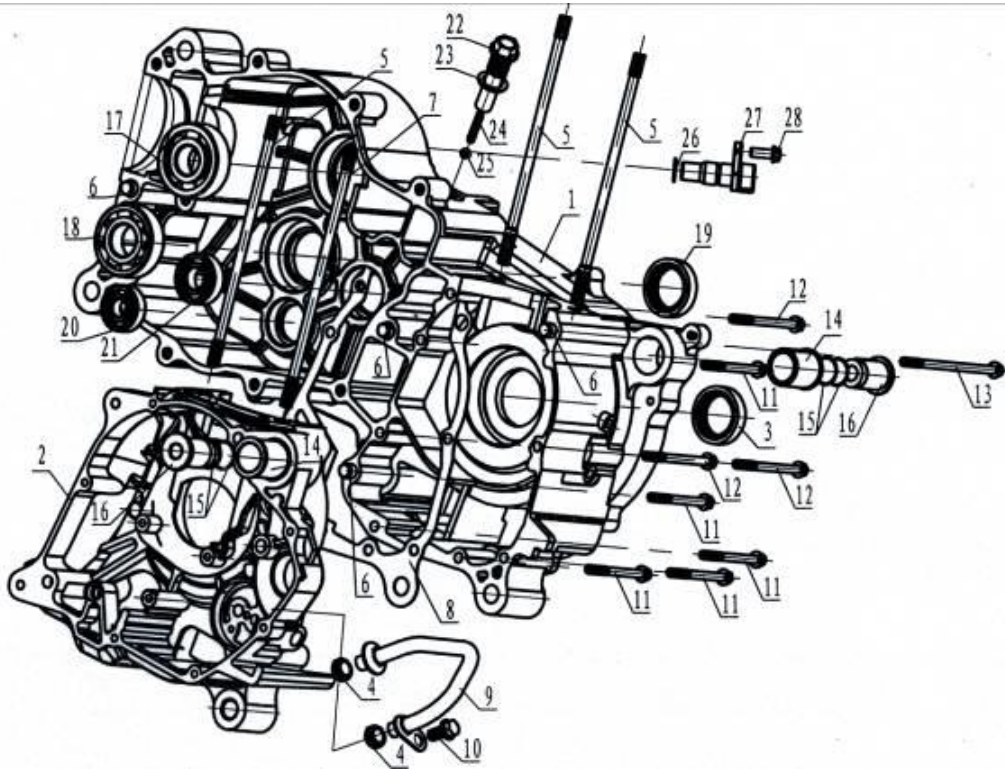


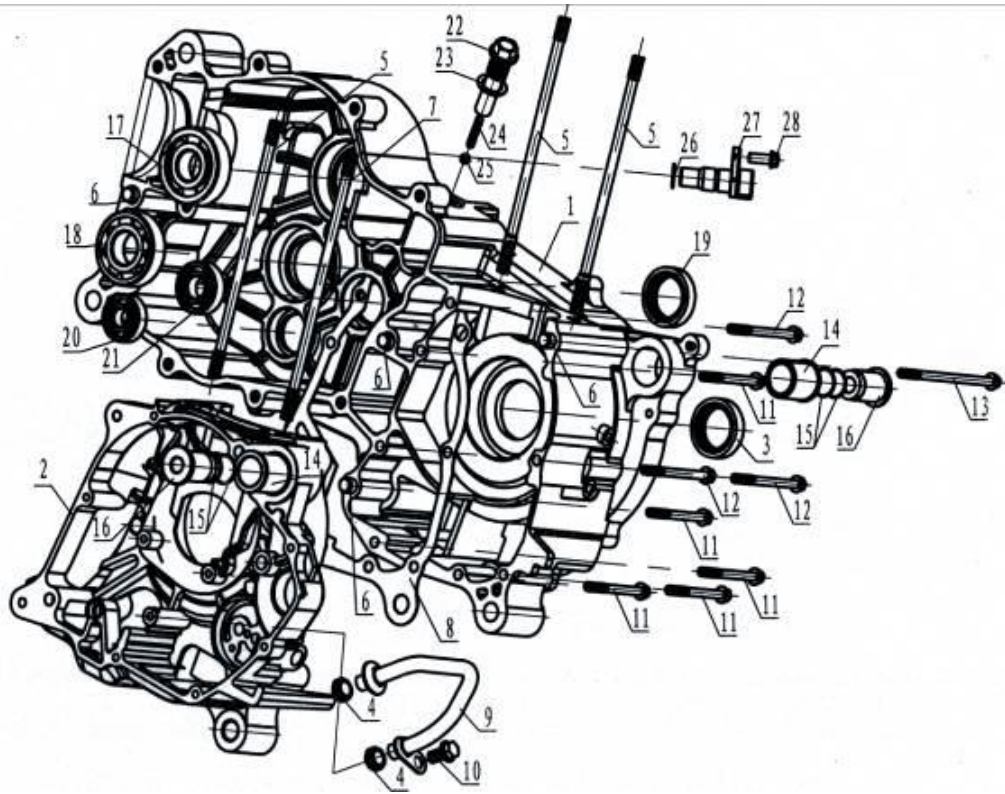
PARTS MANUAL

1 CRANKCASE ASSY.



No.	P/N	ENGLISH	Q'ty
1	172MM-C-011100	LEFT CRANK CASE ASSY	1
2	172MM-C-011200	RIGHT CRANK CASE ASSY	1
3	172MM-011001	SEAL 28X40X8	1
4	172MM-011002	INNER OIL PIPE SEAL RING	2
5	172MM-011004	CYLINDER STUD A	3
6	152MI-021005	LOCATING PIN Ö10x14	4
7	172MM-011005	CYLINDER STUD B	1
8	172MM-B-011006	CRANK CASE SEAL WASHER	1
9	172MM-011400	INNER OIL PIPE	1
10	152MI-021019	BOLT M6X12	1
11	152MI-011017	BOLT M6X60	5
12	1P52MI-011018	BOLT M6X70	3
13	1P52MI-A-011006	BOLT M6X105	1
14	152MI-011010	OUTER SLEEVE.EAR	2
15	152MI-011008	"O" RING FOR SEAL	4
16	152MI-011009	INNER SLEEVE.EAR	2
17	276-B6304	BEARING 6304	1

1 CRANKCASE ASSY.



No.	P/N	ENGLISH	Q'ty
18	172MM-060002	BALL BEARING 22X50X14	1
19	9877- FB33X35X5	OIL SEAL FB 33X35X5	1
20	276-B6201	BEARING 6201	1
21	276- 6202-RS	BEARING 6202-RS	1
22	172MM-B-068001	HOLLOW BOLT M14X1.5	1
23	CF188-068002	WASHER 14.4X22X1	1
24	CF188-068003	SPACER SPRING	1
25	308-3/8	STEEL BALL	1
26	152MI-130004	"O" RING FOR SEAL13.5X1.4	1
	172MM-B-011300	ODOMETER SENSOR	1
27	172MM-B-011400	SEAL CAP	1
28	152MI-023010	BOLT M6X20	1